

A quantitative analysis of squatted social centres in Bcn

Database characteristics:

Squatted Social Centres (SSC)
Bcn metropolitan area
Not related to amount of activities offered
Source: mainly InfoUsurpa
Method: list existence of SSC each month between 1977 and 2013

Limits:

Numerical information only: amount, typology or participation to activities not considered.
Ideology/political orientation / message not considered

Who are the collectives behind SSC not considered
Squat for housing only not considered

Research questions:

What historical evolution in total stock of SSC?

And in flows of SSC (occupations/evictions)?

Which longevity of SSC over time?

Which geographical distribution over

BCN districts/other municipalities?

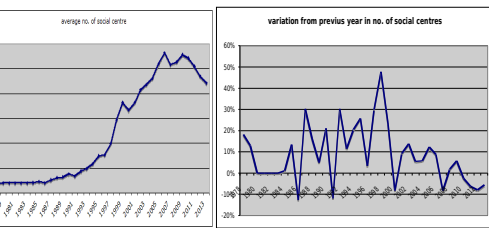
Which cycles can be identified?

Example of database:

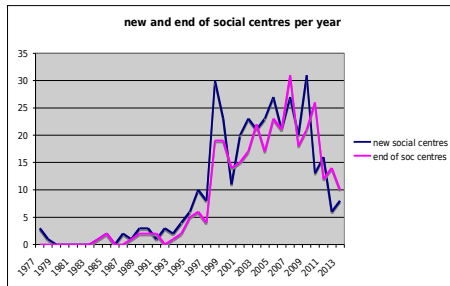
a	Year	Month	2013	2013	2013	2013	2013	Total	
opallars 195	Sant Martí	Garatge CSO	1	
Plaça Santlley	Guarardo	Gasparcho	1	
opere IV 139	Sant Martí	Godverdomme	2	
ofancaster 24	Ciutat Vella	Guernika	1	1	1	1	1	10,5	
C/ Miquel Blech	Sants	Hamsa	97	
cluben diano 70	s.Andreu	Hort del migdia	1	1	1	1	1	64,5	
obanyoles 5	Gracia	Hort Comunitari	21	
oreina amalia 11	Sant Cugat	Hort del Migdia	0,5	1	1	1	1	5,5	
obnacio 46	Ciutat Vella	Hort del Xino	1	1	1	1	1	51,5	
o/hospitalet	l'Hospitalet	Hort de s.eulalia	9	
o/hor popular	Ciut	Hort popular	1	1	1	1	1	60,5	
o/hort valcarca	Gracia	Hort Valcarca	0,5	1	1	1	1	5,5	
o/ikaria	Sant Martí	Ikaria	40	
o/mols de Rei	mols de Rei	Ka la Banyas	40	
o/hora	Gracia	Kalidescopio	1	
o/kampania	Gracia	Kampania	1	1	1	1	1	178,5	
o/kamy-kaz	Cornellá	Kamy-Kaz	1	1	1	1	1	21,5	
b									
Torre dels Ffars			0,5	1	1	1	1	1	
Trakaira			1	1	1	1	1	1	
Vallparadis			1	1	1	1	1	1	
Vapor-Ventalló			1	1	1	1	1	1	
Villa Hortensia			1	1	1	1	1	1	
Villa Kunterbunt			0,5	1	1	1	1	0,5	
Wieslala			1	1	1	1	1	1	
Total			34	35	37	37,5	38,5	39	37,5
			36	35	35,5	35			

Example of database: longevity (a) and total stock (b)

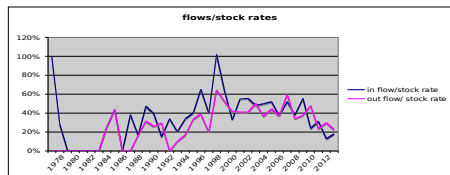
Analysis I: Defining cycles



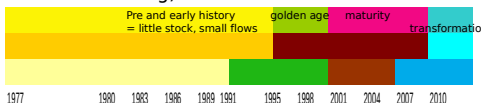
1. Defining cycles based on stock of SSC:
pre-history/early history (1977 to 1991-1992): less than 10 SSC and steady state/slow growth
golden age (1992-1993 to 1999-2000): more than 10 SSC and fast growth
consolidation (2000 to 2006): more than 35 SSC and slow growth
slow decrease (2006 to present): from more than 50 SSC to 40 SSC



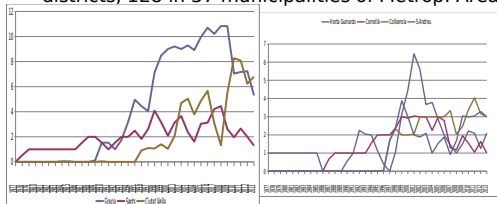
2. Defining cycles based on flows (new occupations and evictions):
 1977 to 1996/1997: **small activity**, peaking up towards the end
 1996/7 to 2010/11: **high activity**, first in new SSC then, from 1998 also in evictions (above 20 per year)
 2010/11 to present: **reduced activity**, from 2010 in new SSC and from 2011 also in evictions (for both figures, around 10 per year).



3. Defining cycles based on relation between flows and stock (flow of new occupations/stock and flow of evictions/stock):
 - in 1995-1996 flow/stock rates reached 40%;
 - in 2001 sum of the two ratios remained constantly above 90 (inflow ratio was bigger (around 50%) than outflow (around 40%))
 - in 2009-2010 ratios fall again but with more evictions than new occupations (total stock starts decreasing)



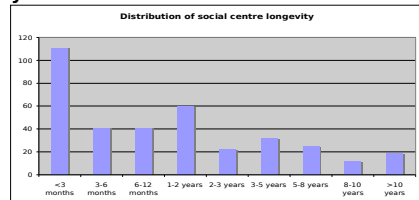
4. Decomposition per area: 239 SSC in 10 BCN districts, 128 in 37 municipalities of Metrop. Area



Analysis II: Longevity, per area

SSC longevity at the BMA level and district/town sub-level

The total absolute lifetime, 10466 months, summed up by each of the 368 SSC implies an absolute average lifetime just above **2 years and 4 months**.



The present stock is much older than the absolute average: 6,3 years vs. 1,75 years. 44 existing SSC sum 3720 months, while 324 evicted SSC summed 6741.

A hypothesis to discuss is the possibility that, as the phenomenon has reached its mature phase, few SSC are consolidating and are "allowed" to survive, while the repression of the past 6-7 years (when stock started to decrease) has made it increasingly difficult to open and maintain a new SSC.

Study of SSCs total historical number, total months and average duration per zone.

- Depending on **average duration**, 3 clusters are identified:

	AVERAGE DURATION	TOTAL MONTHS	NUMBER OF SSC
HIGH	57,4	2650	47
NORMAL	25,1	7298	291
LOW	5,7	165	29

Finding: "short average duration of SSCs" -> "zone with low number of SSCs" shows a direct relationship.
 "long average duration" -> "zone with high number of SSCs" does not show relationship.
 Also, districts of BCN are all within the "normal duration" cluster.

- Depending on accumulated experience (total months), 3 clusters are identified:

	TOTAL MONTHS OF SSC	NUMBER OF SSC	AVERAGE DURATION
HIGH	8522	274	31,1
NORMAL	1413	74	19,1
LOW	87	19	4,6

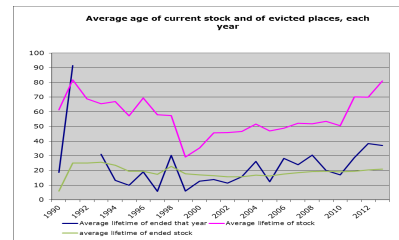
Finding: through perseverance in squatting eventually durable SSCs will emerge in one zone, which will contribute to enlarge average lifetime of local SSCs.

Analysis III: Longevity, across time

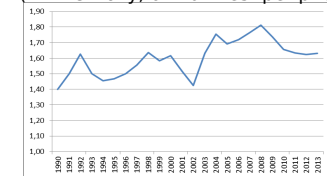
although the number of SSCs is decreasing, the total accumulated experience of existing SSCs is almost always increasing

YEAR	NUMBER OF SSC	TOTAL MONTHS	AVERAGE MONTHS
1990	10	613	61
1993	10	655	65
1996	14	971	69
1999	36	1053	29
2002	40	1834	46
2005	52	2440	47
2008	53	2747	52
2011	49	3434	70
2013	46	3723	81

How old were on average the SSCs evicted each year? And all SSCs previously evicted? The comparison with the average lifetime of existing SSCs each year.



Average zoning enlarged up to year 2008 (1= BCN city, 6= furthest periphery)



Interpretation of results

4 phases: from 1977; 1995; 2001; 2009;
 Counter cultural squatting emerges only half way through the first one (1984) and these squats did not last long.
 In the 2nd, "golden age", new squats flourish in many BNC districts and municipalities.
 High activity
 In the 3rd, "maturity", SSCs are present well beyond central BCN
 The present, sees a "transformation" as the decline in number is contrasted by:
 -greater maturity (establishment of few SSCs)
 -post-crisis movement for the right to housing